

## Deep Back & Spinal Cord

Dr. Craig Goodmurphy  
Anatomy Guy

---

---

---

---

---

---

---

---

### Major Dissection Objectives True Back Muscles

1. Reflect the superficial and intermediate back muscles laterally
2. Identify the splenius capitus just deep to upper and middle fibers of trapezius
3. Identify the erector spinae group with the iliocostalis, longissimus and spinalis muscles from lateral to medial
4. Identify the deeper group of transversospinalis muscles without worrying about the subgroups of semispinalis, multifidus and rotatores
5. Skip the suboccipital dissection

---

---

---

---

---

---

---

---

### Major Dissection Objectives Laminectomy & Spinal Cord

1. Cut across the true back muscles and pull them laterally from the lower 6 thoracic and lumbar regions exposing the lamina of the vertebrae.
2. Use chisel or autopsy saw to cut the lamina bilaterally once they are exposed.
3. Cut across the interspinous ligaments & ligamenta flava to remove the segment of vertebral arches.
4. Open the dura and observe the other meninges and parts of the spinal cord
5. locate cauda equina, filum terminale dentate ligaments, DRG and Peripheral nerves

---

---

---

---

---

---

---

---

### Pearls & Problems

- Do 1. Remember that deep back muscles are innervated by dorsal rami.
- Do 2. Identify the erector spinae and the transversospinalis muscle by their fiber direction
- Do 3. Look closely at the skeleton parts of the vertebrae and specifically the lamina of each area before cutting them to ensure you have the best angles
- Don't 4. Cut through the transverse processes and don't cut the lamina too close to the spinous processes.
- Do 5. Review the parts of the CNS and PNS and ensure you know which modalities exist in the various areas

---

---

---

---

---

---

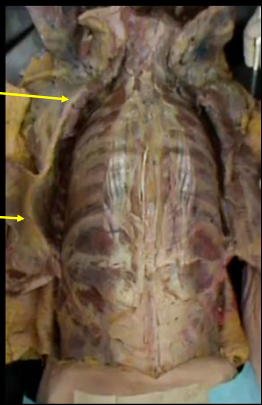
---

---

Reflect the superficial and intermediate back muscles laterally

Trapezius & Rhomboids reflected

Lat. Dorsi reflected



---

---

---

---

---

---

---

---

Identify the splenius capitus just deep to upper and middle fibers of trapezius



splenius

Trapezius reflected

---

---

---

---

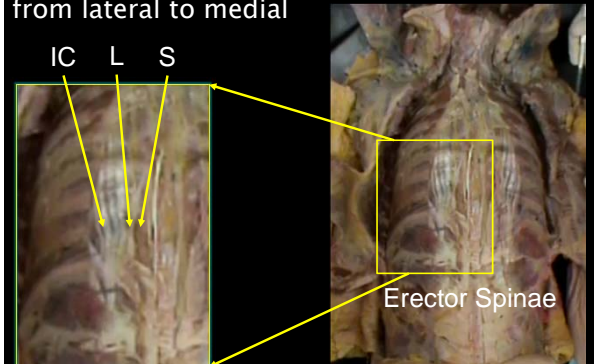
---

---

---

---

Identify the erector spinae group with the iliocostalis, longissimus and spinalis muscles from lateral to medial



---

---

---

---

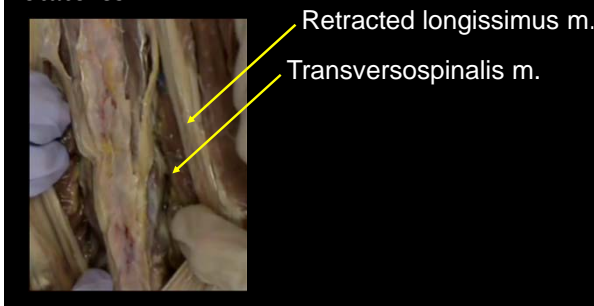
---

---

---

---

Identify the deeper group of transversospinalis muscles without worrying about the subgroups of semispinalis, multifidus and rotatores



---

---

---

---

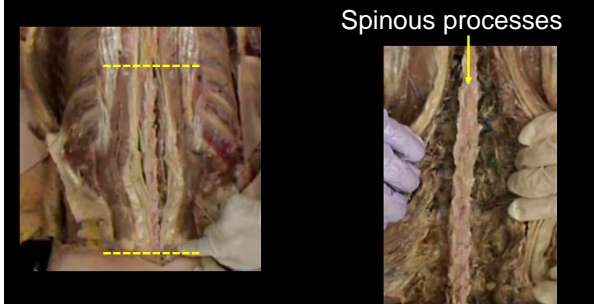
---

---

---

---

Cut across the true back muscles and pull them laterally from the lower 6 thoracic and lumbar regions exposing the lamina of the vertebrae.



---

---

---

---

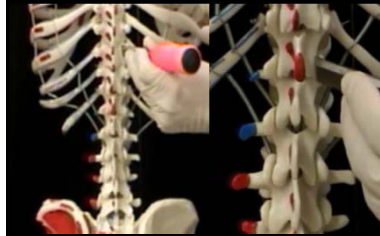
---

---

---

---

Use chisel or autopsy saw to cut the lamina bilaterally once they are exposed



---

---

---

---

---

---

---

---

Cut across the interspinous ligaments & ligamenta flava to remove the segment of vertebral arches.



---

---

---

---

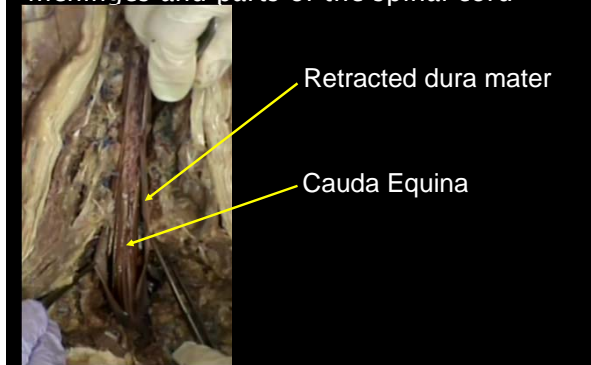
---

---

---

---

Open the dura and observe the other meninges and parts of the spinal cord



---

---

---

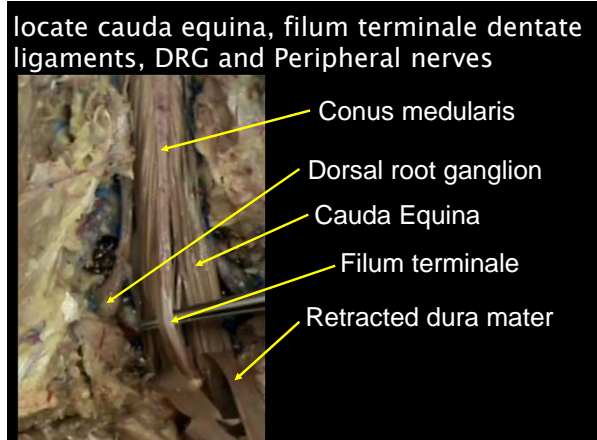
---

---

---

---

---



---

---

---

---

---

---

---

---